



GOOD MORNING

Have Good Trading Day

TUESDAY



Price is what you pay.
Value is what you get.

- Warren Buffet

MARKET PULSE

INDIAN INDICES

NAME	CMP	NET CH.	%
SENSEX	25678	-159	-0.62
NIFTY	7855	-44	-0.56

INDIAN ADR'S

SYMBOL	CLOSE	GAIN/ LOSS %
DRREDDY	46.77	-0.68
HDFCBANK	62.67	-0.27
ICICIBK	7.59	-0.19
INFY	19.08	Unch
TATAMOTOR	30.56	-0.74
WIPRO	12.29	+0.08

FII AND MF ACTIVITY

SYMBOL	In Crs.
FIIs Eq (Provisional)	222.34
FIIs Index Future	12.79
FIIs Index Options	759.43
FIIs Stock Future	-43.20
FIIs Stock Options	-136.98
DII's Eq (Provisional)	-747.95

CURRENCY

RBI RATE	25-APR-2016
RUPEE - \$	66.6839
EURO	74.9527
YEN 100	59.9900
GBP	96.3249

MARKET PULSE

GLOBAL INDICES

NAME	CMP	NET CH.	%
DOW	17977	-26	-0.15
NASDAQ	4895	-10	-0.21
NIKKEI	17219	-219	-1.26
HANG SENG	21174	-130	-0.61
SGX NIFTY	7850	-25	-0.32

WORLD COMMODITIES

FUTURE	US\$	CHANGES
CRUDE	43.04	+0.40
NATURAL GAS	2.192	+0.005
GOLD	1240.6	+0.40
SILVER	17.050	+0.041
COPPER	2.2535	+0.0010

WORLD EVENTS

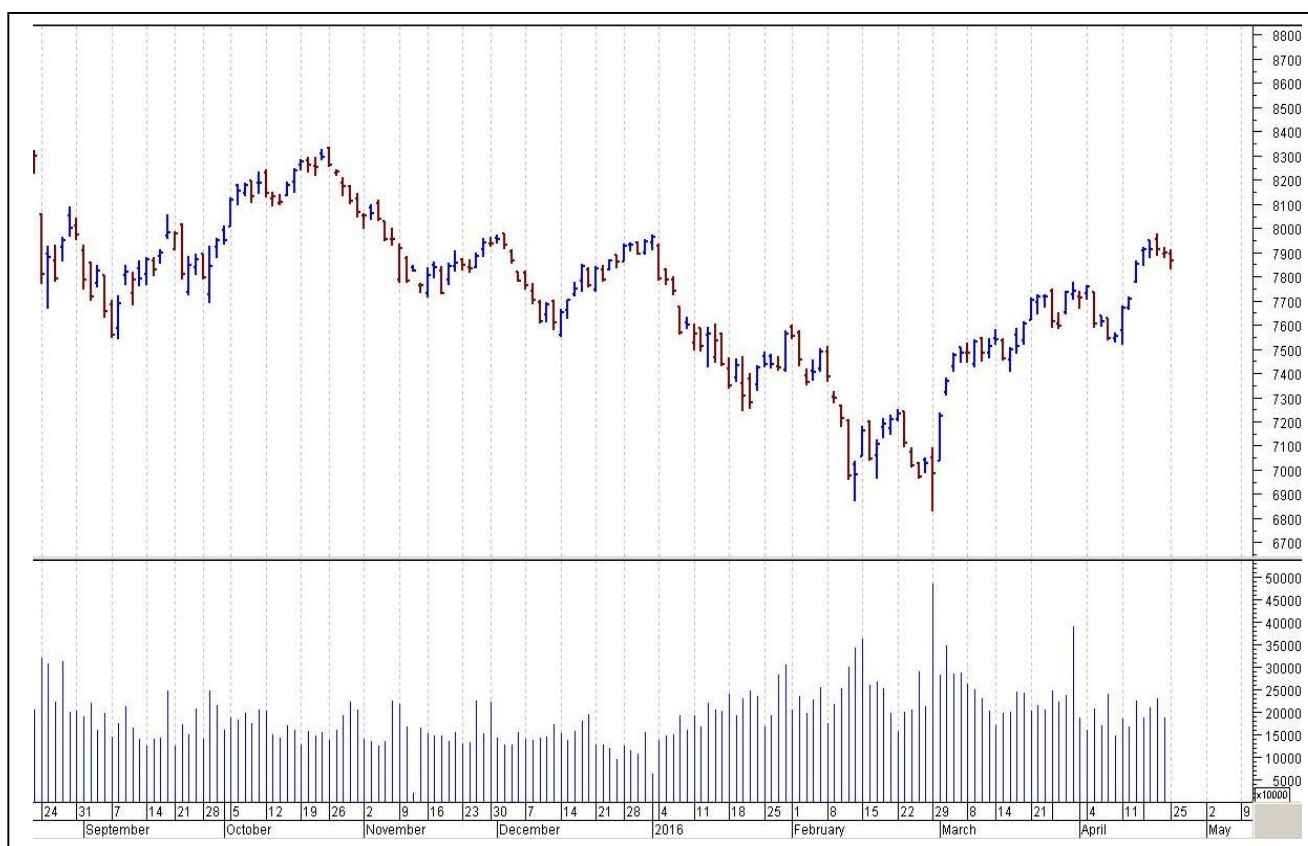
- US:Core Durable Goods Orders m/m
- CB Consumer Confidence
- UK:MPC Member Cunliffe Speaks

TOP STORY

- Foreign Participation In Tobacco Product Licensing For Franchise To Be Banned: Sources
- Sumitomo Chem looking to buy stake of 24.7% in Excel Corp. Deal could be valued at `1500 cr
- Bharti Airtel seeks TRAI nod to offer video content via pvt network: Reports
- Hero to invest `3000 cr to set up 1.8 million units capacity in AP: BS
- ONGC - FY17 PAT to take `3000 cr hit on falling gas price: BS
- Sun Pharma ties up with Govt of India, ICMR & MP Govt for Malaria Free India
- Linde India commences commercial production at 2nd Air Separation Unit at Tata Steel Ltd's Kalinganagar Plant
- Prism Cement receives Rs 111 Cr from Raheja QBE Insurance for sale of 23% Equity
- EIL signs contract with Bangladesh Petroleum Corporation (BPC) for providing PMC Services for "Installation of ERL Unit-2" in Bangladesh



NIFTY CHART



MARKET COMMENTARY

Indian equity indices commenced the F&O expiry week on a disturbing note as they went on to extend the declining streak for the second successive session, market participants remained on the sidelines lacking conviction amid slips in crude oil prices and depreciating rupee. Indian rupee was trading lower by 21 paise at 66.71 against the dollar at the time of equity markets closing on sustained demand for the US currency from importers. Besides, traders remained cautious ahead of the April derivative contracts on Thursday and policy decisions from the Bank of Japan and US FOMC this week. For today's trade Nifty likely to trade in the range between 7865 – 7895 in the upper side and 7835 – 7815 in the lower side.

MARKET LEVELS

	CMP	SUPPORT LEVELS				RESISTANCE LEVELS			
NIFTY	7855	7835	7815	7795	7765	7865	7895	7915	7935
USDINR	66.65	66.5	66.4	66.35	66.2	66.75	66.85	66.9	67.05



BULK DEALS (BSE)

SCRIP	CLIENT NAME	BUY/SELL	QUANTITY	PRICE
PIDILITIND	GENESIS INDIAN INVESTMENT COMPANY LIMITED	S	33,442,429	591.2
PIDILITIND	GENESIS EMERGING MARKETS L P	B	33,442,429	591.2
VGUARD	STEADVIEW CAPITAL MAURITIUS LIMITED	S	1,054,131	930
VGUARD	DSP BLACKROCK MUTUAL FUND	B	1,196,000	930
VGUARD	NORGES BANK ON ACCOUNT OF THE GOVERNMENT PENSION FUND GLOBAL	B	343,710	930

BULK DEALS (NSE)

SCRIP	CLIENT NAME	BUY/SELL	QUANTITY	PRICE
CHROMATIC	BUDDHISAGAR SHARES AND SERVICES PRIVATE LIMITED	SELL	600000	3.88
CHROMATIC	JIGNESHBHAI HIRALAL SHAH	SELL	600000	3.82

SCRIP'S IN F&O BAN

(To resume for normal trading below 80% of market wide limit required)

JINDALSTEL, IBREALEST, INDIACEM

Initial Public Offering (IPO)

Company Name	Security type	Issue Start Date	Issue End Date	Status
Ujjivan Financial Services	Equity	Apr 28, 2016	May 02, 2016	Forthcoming
Thyrocare technologies	Equity	Apr 27, 2016	Apr 29, 2016	Forthcoming



NIFTY 50 STOCKS: SUPPORT & RESISTANCE						
Symbol	Close	Support 1	Support 2	Pivot Point	Resistance1	Resistance2
ACC	1423	1409	1396	1420	1433	1443
ADANI PORTS	232	230	228	232	234	235
AMBUJACEM	223	222	220	223	225	226
ASIANPAINT	862	855	848	863	869	877
AXISBANK	470	464	458	471	477	483
BAJAJ-AUTO	2544	2518	2492	2539	2565	2586
BANKBARODA	158	155	153	159	161	165
BHARTIARTL	359	354	349	359	364	369
BHEL	126	124	122	126	127	129
BOSCHLTD	19845	19630	19416	19865	20079	20314
BPCL	978	964	950	973	987	996
CAIRN	145	143	141	146	148	151
CIPLA	527	522	518	528	532	538
COALINDIA	288	286	284	289	290	293
DRREDDY	3116	3086	3056	3128	3158	3199
GAIL	360	355	351	362	367	374
GRASIM	4039	4001	3963	4028	4066	4093
HCLTECH	845	841	837	845	850	854
HDFC	1112	1103	1094	1115	1124	1136
HDFCBANK	1093	1085	1077	1093	1101	1108
HEROMOTOCO	2962	2938	2915	2981	3004	3047
HINDALCO	98	96	94	99	101	104
HINDUNILVR	884	877	869	883	890	896
ICICIBANK	253	251	249	253	255	257
IDEA	118	117	116	118	119	120
INDUSINDBK	982	975	968	981	988	994
INFY	1216	1203	1190	1214	1227	1238
ITC	321	319	317	322	324	327
KOTAKBANK	680	673	666	678	685	690
LT	1266	1256	1246	1267	1276	1287
LUPIN	1543	1533	1524	1545	1555	1567
M&M	1327	1318	1309	1326	1335	1343
MARUTI	3728	3681	3635	3762	3808	3889
NTPC	140	138	135	141	143	147
ONGC	212	211	209	213	215	218
PNB	89	88	87	90	91	92
POWERGRID	144	142	141	144	146	148
RELIANCE	1017	1005	992	1025	1037	1057
SBIN	197	194	192	198	201	205
SUNPHARMA	809	800	792	811	819	830
TATAMOTORS	412	409	406	413	417	421
TATAPOWER	70	69	68	70	70	71
TATASTEEL	347	343	339	349	353	358
TCS	2451	2417	2382	2437	2471	2492
TECHM	472	466	460	475	481	491
ULTRACEMCO	3276	3246	3216	3287	3317	3358
VEDL	102	100	98	103	104	107
WIPRO	552	548	544	555	559	566
YESBANK	879	871	864	878	886	893
ZEEL	401	397	393	400	404	407



CORPORATE ACTION / BOARD MEETINGS

NSE Download Ref No:NSE/FAOP/32249:- Exclusion of Futures and Options contracts on IOB and UCOBANK w.e.f. July 01, 2016

BOARD MEETINGS

COMPANY NAME	DATE	PURPOSE	RS. PER SH.
VESUVIUS	26-Apr-16	Dividend	6.25
CASTROLIND	27-Apr-16	Annual General Meeting/ Dividend	5
RAIN	27-Apr-16	Annual General Meeting	
PAPERPROD	27-Apr-16	Dividend	2.8
CRISIL	28-Apr-16	Dividend	5
SMARTLINK	28-Apr-16	Buyback Of Shares	
DISHMAN	2-May-16	Bonus 1:1	
GDL	4-May-16	Dividend	
ITDCM	4-May-16	Annual General Meeting	
HCLTECH	5-May-16	Dividend	
LINDEINDIA	6-May-16	Annual General Meeting/ Dividend	0.75
MAHINDCIE	9-May-16	Annual General Meeting	
GODREJCP	10-May-16	Dividend	
GMBREW	10-May-16	Annual General Meeting/ Dividend	2.5
NESTLEIND	16-May-16	Dividend	18.5
RIIL	20-May-16	Dividend	3.5

NEWS & RUMOURS:

- Gold (Spot Dollar) major support = \$1218/\$1191 & Resistance = \$1269/\$1296.
- Crude oil range->\$38 to \$48.
- Global Stocks Decline as Crude Oil Retreats, Dollar Weakens: - Shares retreated around the world, as crude oil retreated from a five-month high amid concerns that a supply glut will persist. The yen strengthened, reflecting investor caution before central bank meetings this week in the U.S. and Japan.
- China Stocks Fall to Lowest in Month on Commodity Futures Curbs: - China's stocks fell, extending the biggest weekly decline in almost three months, after commodity exchanges moved to cool trading in raw materials and signs of accelerating economic growth reduced odds of further easing of monetary policy.
- Gold ticks higher but gains capped before Fed meeting: - Gold prices ticked higher on Monday as the dollar slid lower, but gains were held in check ahead of the Federal Reserve's policy meeting later in the week. Lower interest rates tend to help gold, as the metal pays its holders nothing, but it struggles to compete with yield-bearing investments when interest rates rise.
- Oil lower as investors take profits after price gains: - Oil prices dipped on Monday as traders took profits after three weeks of gains and as a jump in the dollar late last week was priced into fuel markets. Analysts said the price drops (on profit-taking) were a result of cashing in after three weeks of rising prices.
- Dollar remains broadly lower after weak U.S. data: - The dollar remained broadly lower against the other major currencies on Monday, after the release of weak U.S. housing sector data and as sentiment on the greenback remained fragile ahead of the Federal Reserve's policy meeting this week.

TRENDS & OUTLOOK – DATE: 26- Apr- 2016

PRECIOUS METALS:

COMMDITY (MCX)	S2	S1	PIVOT POINT	R1	R2
GOLD (June)	28765	28950	29230	29570	29890
SILVER (May)	38100	39000	40100	41200	42550

BASE METALS

COMMDITY (MCX)	S2	S1	PIVOT POINT	R1	R2
COPPER (Apr)	324	328	333	338	343
ZINC (Apr)	120.30	122.20	124.70	127.50	130.30
LEAD (Apr)	111.40	114.10	117.30	119.50	122.20
NICKEL (Apr)	575	590	606	621	639

ENERGY

COMMDITY (MCX)	S2	S1	PIVOT POINT	R1	R2
CRUDE OIL (May)	2727	2820	2910	3000	3075
NATURAL GAS (Apr)	127	132	139	146	151

DATE TALKS : TODAY'S ECONOMIC DATA :

Core Durable Goods Orders, Durable Goods Orders, S&P/CS Composite-20 HPI, Flash Services PMI, CB Consumer Confidence, Richmond Manufacturing Index, MPC Member Cunliffe Speaks.



Registered Office

Indira House, 3rd Floor, 5 Topiwala Lane,
Opp. Lemington Road Police Station, Grant Road (East), Mumbai - 400007.

Corporate Office

'Ramavat House' E-15, Saket Nagar, Indore - 452018 (M.P.)

Customer Care

Tel: +91-731-4097170/ 71/ 72/ 73/ 74 M. +91 93031 72345

Email: customercare@indiratrade.com www.indiratrade.com



INSTITUTIONAL DEALING UNIT

Africa House, 5, Topiwalla Lane, Lamington Road, Mumbai, 400007

Tel: +91 22 30080678 Fax : +91 22 23870767 Email : ie@indiratrade.com

Disclaimer

This report is for private circulation within the Indira Group. This report is strictly confidential and for information of the selected recipient only and may not be altered in any way, transmitted to, copied or distributed, in part or in whole, to any other person or to the media or reproduced in any form. This report should not be construed as an offer or solicitation to buy or sell any securities or any interest in securities. It does not constitute a personal recommendation or take into account the particular investment objectives, financial situations, or any such factor. The information, opinions estimates and forecasts contained here have been obtained from, or are based upon, sources we believe to be reliable, but no representation of warranty, express or implied, is made by us to their accuracy or completeness. Opinions expressed are our current opinions as of the date appearing on this material only and are subject to change without notice.